

# tramway turnouts | references



# Australia



Gold Coast

	ITEM	RAIL PROFILE	QUANTITY	YEAR	PLACE
tramway	single turnout	Ri57A	2	2010-2012	Melbourne
	diamond crossing		3		
	manual rail box DT2		2		
	turnout	60R2	9	2013	Sydney
	turnout	UIC60	7		
turnout	51R1	3	2017	Gold Coast	
single crossover		1			
diamond crossing	1				
Dillidur turnout	51R1	1	2023	Canberra	

# Belgium



Gent

	ITEM	RAIL PROFILE	QUANTITY	YEAR	PLACE
tramway	turnout	60R2	1	2009	Charleroi
	turnout	62R1	50	2003-2005	Gent
	crossing		9		
	double crossover		3		
turnout structure	6	2009-2018			
half set of switches	1				
	turnout	62R2	10	2019	Oostende

# Croatia

	ITEM	RAIL PROFILE	QUANTITY	YEAR	PLACE
tramway	switch crossing	60R1	59 101	2010-2014	Zagreb
	crossing diamond crossing set of switches		43 11 3	2017-2018	

# Greece



Athens

	ITEM	RAIL PROFILE	QUANTITY	YEAR	PLACE
tramway	turnout	60R1	6	2007	Athens
	tongue rail	59R2	3	2019	Greece

# Czech Republic



Ostrava - Hranecnik

	ITEM	RAIL PROFILE	QUANTITY	YEAR	PLACE
tramway	turnout crossing switch	NT1	22 3 6	2010, 2014	Most
	turnout switch crossing single slip	NT1	12 8 2 1	2004-2022	Olomouc
	switch turnout crossing	NT1	27 20 5	2008-2023	Plzeň
	turnout	S49	1		
	turnout single crossover	49E1	29 1	2014-2023	Ostrava
	turnout crossing block switch single crossover double crossover	57R1	32 11 21 1 5		
	block switch	NT1	15		
	turnout single crossover	49E1	5 1	2019-2023	

# Germany



Bremen

	ITEM	RAIL PROFILE	QUANTITY	YEAR	PLACE
tramway	turnout crossing	59R2 60R2	4 3	2019-2022	Krefeld
	turnout crossing		6 3	2019	Magdeburg
	turnout		1	2019	Karlsruhe
	turnout		13	2019-2022	Berlin
	turnout		4	2019	Essen
	turnout crossing		13 1	2019-2023	Bremen
	turnout crossing		6 1	2020-2024	Duisburg
	turnout		11	2023	Düsseldorf (depot Lierenfeld)
	turnout		2		Kassel

# Netherlands



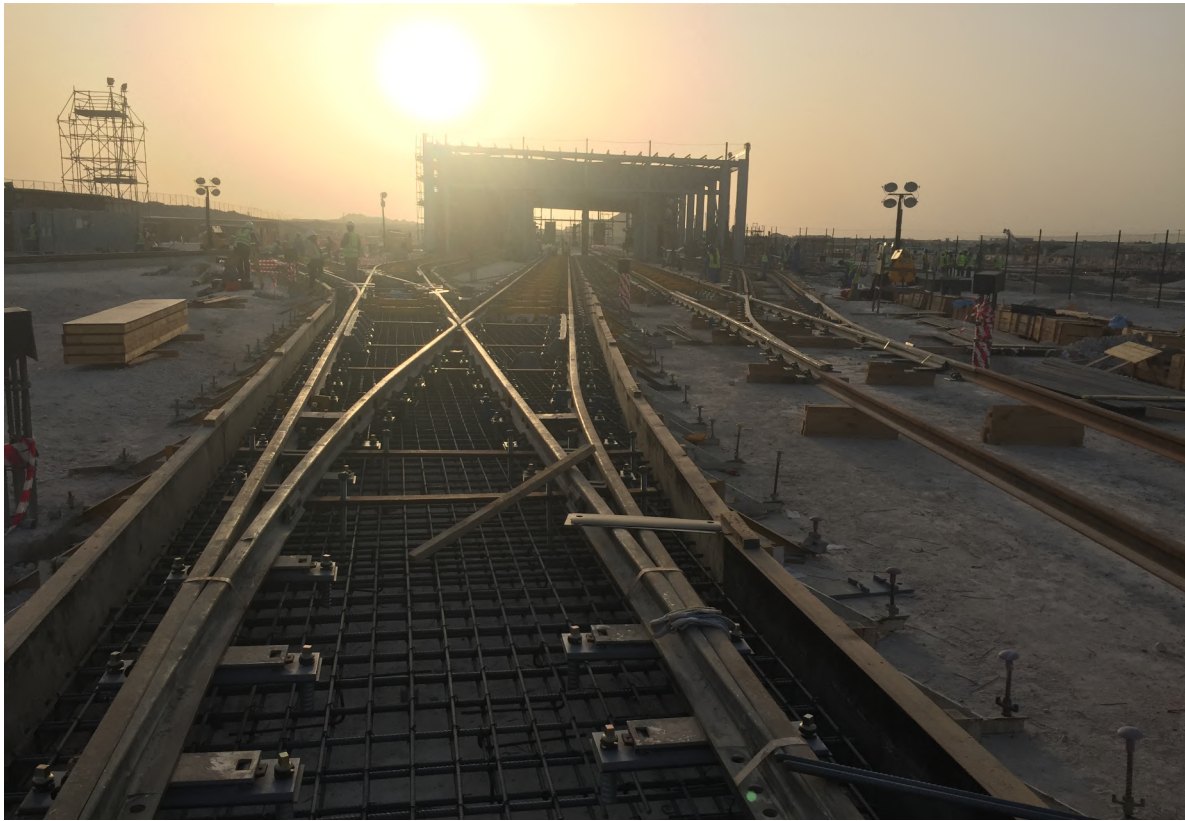
Amsterdam

	ITEM	RAIL PROFILE	QUANTITY	YEAR	PLACE
tramway	turnout crossing tongues	60R2	13 5 8	2019	Amsterdam (De Entree)
	turnout		10		
	turnout		7	2023	HTM Haag

# Norway

	ITEM	RAIL PROFILE	QUANTITY	YEAR	PLACE
tramway	turnout crossing	60R2	6 3	2007	Oslo

# Qatar



Doha

	ITEM	RAIL PROFILE	QUANTITY	YEAR	PLACE
tramway	single crossover	60R2	2	2013	DOHA (Education City)
	turnout expansion joint	49E1	26 18	2014-2016	
	turnout crossing scissor crossover insulated rail joint	60R2	38 7 2 14		
	switch set	60R2	2	2020	

# Taiwan

	ITEM	RAIL PROFILE	QUANTITY	YEAR	PLACE
tramway	turnout	54R2	27	2014	Kaohsiung
	turnout	54G1	31	2017-2019	



# Slovakia



Kosice - Modavska

	ITEM	RAIL PROFILE	QUANTITY	YEAR	PLACE
tramway	switch	NT1	47	2001-2013	Bratislava
	turnout crossing	NT3 57R1	23 11	2002-2004, 2009-2011	Košice
	turnout single crossover double crossover	57R1	49 12 1	2015-2018	
	turnout comb	57R1	58 1	2023-2024	Košice

# Spain

	ITEM	RAIL PROFILE	QUANTITY	YEAR	PLACE
tramway	turnout single crossover double slip	62R2	22 2 3	2006	Parla
	turnout crossing single crossover		2 7 1	2009-2010	Malaga
	turnout single crossover double crossover		3 9 1	2009-2013	Granada
	turnout single crossover crossing comb		27 7 4 2	2010-2013	Zaragoza
	tongue rail	60R2	5	2020	
	tongue	60R2	4	2021	

# Sweden



Göteborg - Ringön Depot



	ITEM	RAIL PROFILE	QUANTITY	YEAR	PLACE
tramway	crossing	57R1	2	2009	Norrköping
	turnout double slip manual rail box DT2		7 1 8	2010-2012	
	set of switches crossing	60R2	33 1	2015-2016	Göteborg
	turnout inside single slip diamond crossing manual rail box DT2 electric rail box DT6 welded set of switch		72 3 6 17 1 21	2012-2020	

# Turkey

	ITEM	RAIL PROFILE	QUANTITY	YEAR	PLACE
tramway	turnout single crossover	59R2	57 2	2004-2008	Istanbul
	half switch turnout		7 2	2023	

# Switzerland



Limmattalbahn

	ITEM	RAIL PROFILE	QUANTITY	YEAR	PLACE
tramway	turnout switch crossing	60R1	3 1 1	2016	Basel
	turnout crossing comb		67 10 1		
	turnout crossing switch comb	60R2	34 7 10 2	2001-2014	Zürich
	turnout crossing single crossover scissors crossover		30 5 4 2		
	switch turnout crossover	61R1	9 6 12	2023	Basel

# USA

	ITEM	RAIL PROFILE	QUANTITY	YEAR	PLACE
tramway	turnout crossing crossover	59R2	2 1 1	2014-2016	Portland

